

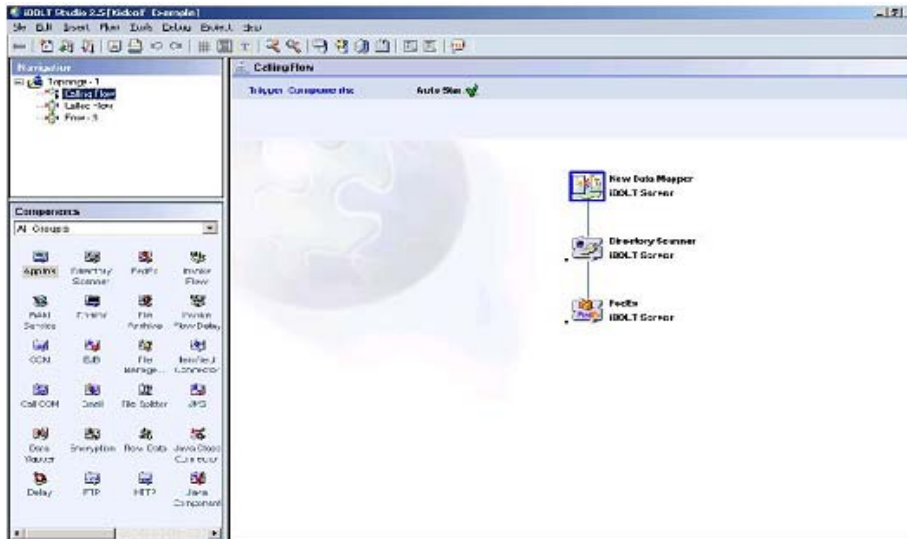


**iBOLT**  
Business Driven Integration



## What's New in iBOLT 2.5

### New and Improved Look & Feel



iBOLT 2.5 Studio has an improved look-and-feel, having received an extensive across-the-board upgrade to its graphical interface and general usability.

The upgrade also includes new functionality, including:

- Additional Studio-related settings
- Additional project-related settings
- New central repositories
- Improved menus
- Easier viewing of properties
- Improved visual experience

### Benefit

Improvements in the iBOLT 2.5 user interface make project development even easier and more intuitive than previous versions, reducing time spent on project development. This continues iBOLT's commitment towards being the most flexible, easy-to-use integration tool in the market.



**iBOLT**  
Business Driven Integration



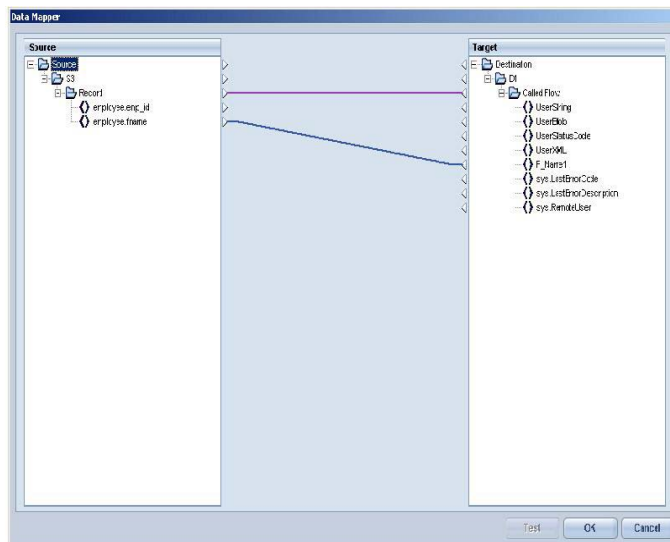
## .NET Development Framework Support

iBOLT 2.5 is committed to fully supporting heterogeneous IT and standard development environments. iBOLT 2.5 adds support for components developed using the .NET framework, allowing access to components written in VB.NET or C#, as part of iBOLT Flows. This is in addition to components written in Java and eDeveloper.

### Benefit

The enhancement of .NET framework to the existing Java and eDeveloper as optional development tools, further reduces the TCO by enabling end-users to utilize existing expertise to develop iBOLT components.

## Data Mapper Enhancements



Additional functionality enhances the power of the Data Mapper in iBOLT 2.5. The Data Mapper now provides the following enhanced data transformation capabilities:

- Support for ODBC
- Mapping source data to HTML destinations
- Drag-and-Drop of elements to automatically create connections between sources and destinations
- The Connect-All feature allows easy connection and deletion of connections for multiple source and destination elements that have identical names (connect-by-name)

### Benefit

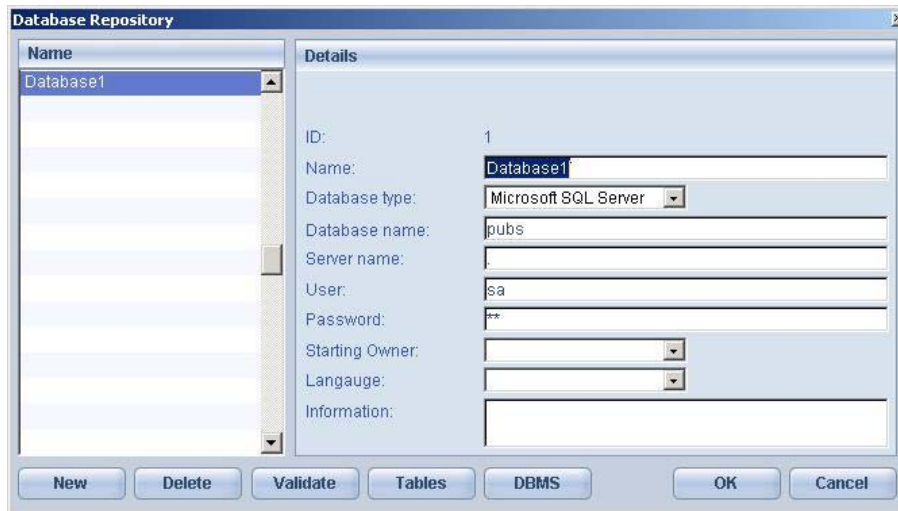
A central part of any integration project, data transformation is performed in iBOLT with the Data Mapper. Enhancements made to this existing sophisticated integration feature further strengthen iBOLT's out-of-the-box data integration capabilities.



**iBOLT**  
Business Driven Integration



## Additional Database Support



An integral part of any integration project, is the database connectivity. iBOLT 2.5 has added support for additional databases such as DB2, DB2/400 and ODBC. To further the simplicity of data management, database connectivity is now managed in a central project-wide Database Repository. This enables the database connection to be configured once for the entire project regardless of the amount of different process flows connected to the database. Additional improvements have been made to the SQL Wizard to add functionality and ease-of-use when connecting to SQL databases.

### Benefit

The central Database Repository enables flexible design of projects that work with multiple databases. Thereby simplifying and reducing the amount of configuration required for each project, and reducing the overall development and maintenance time.

## Additional Internal Operational Database

Pervasive SQL, DB2, DB2/400 and MySQL have been added as an internal operational database. These in addition to MSSQL and Oracle can now be used as iBOLT's native databases for project development.

### Benefit

Support for additional inexpensive databases allow additional flexibility in project development. iBOLT's unique development paradigm enables a project to be developed with one database and then seamlessly and simply deployed into a production environment with a different database.

**See iBOLT Suite's HELP and iBOLT 2.5 Release Notes for detailed descriptions and instructions.**